



CERTIFICATE OF ANALYSIS

20 Martin Ross Avenue, North York, ON, M3J 2K8, CANADA
Tel: (416) 665-9696, Fax: (416) 665-4439
Email: orders.trc@lgcgroup.com Website: www.trc-canada.com

1. Identification

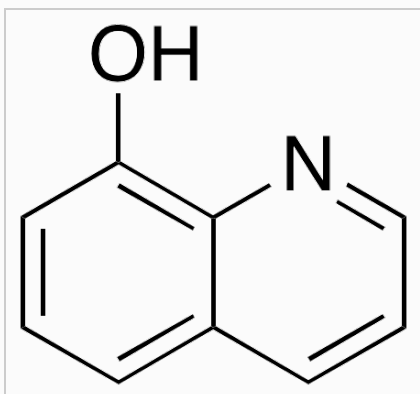
Catalogue Number: H953265

CAS Number: 148-24-3

Product: 8-Hydroxyquinoline

Synonym: 8-Quinolinol; 1-Azanaphthalene-8-ol; 8-Hydroxyquinolin; 8-Oxyquinoline; 8-Quinol; AQ+; Albisal; Fennosan H 30; Oxin; Oxine; Oxoquinoline; Oxychinolin; Oxyquinoline; Phenopyridine; Quinophenol; Tumex; NSC 2039; NSC 285166; NSC 402623; NSC 48037; NSC 54230; NSC 615011; NSC 82404; NSC 82405; NSC 82409; NSC 82410; NSC 82412;

Structure:



Molecular Formula:

C₉H₇NO

Molecular weight:

145.16

Source of Product:

N/A

Solubility:

Chloroform (Soluble),
Methanol (Slightly)

Lot Number: 2022-CPO-033

Purity: 98%

Shipping Condition: This Product Is Stable To Be Shipped At Room Temperature

Storage Condition: 4°C

2. Warning

Warning 1:

Warning 2:

Warning 3:

3. Analytical Information

| Tests: | Specifications: | Results: |
|--------------------|--------------------------------|-------------------------------|
| Appearance | Off-White to Pale Yellow Solid | Off-White Solid |
| Elemental Analysis | Conforms | %C: 74.30, %H: 4.76, %N: 9.95 |
| NMR | Conforms to Structure | Conforms |
| C NMR | Conforms to Structure | Conforms |
| HPLC Purity | Report Result | 100.00% (250 nm) |
| MS | Conforms to Structure | Conforms |

Additional Information: N/A

Purity is based on the analytical results of the tests performed. NMR and Elemental Analysis (if available) may have an accuracy of $\pm 2\%$. Isotopic purity is based on mass distribution observed. The contents of the specifications are subject to change without advance notice, and the specification values displayed here are the most up to date values.

4. Signatures

| Reviewed By | Reviewed By | C of A Approved By | Test Date | Retest Date |
|---|---|---|------------|-------------|
| Henry Tieu | Toni Rantanen | Chanell Chu | 11/14/2022 | 11/12/2026 |
|  |  |  | | |